

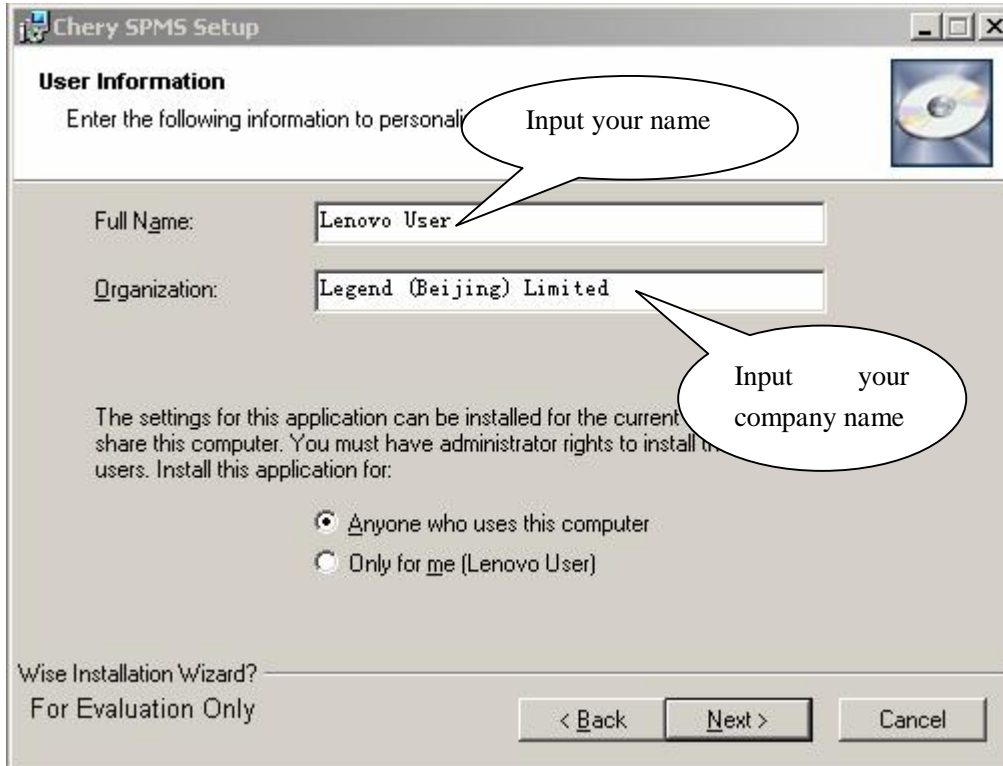
CHERY SPARE PARTS SYSTEM MANUAL

First, install the software for the system. The install steps is as follow:

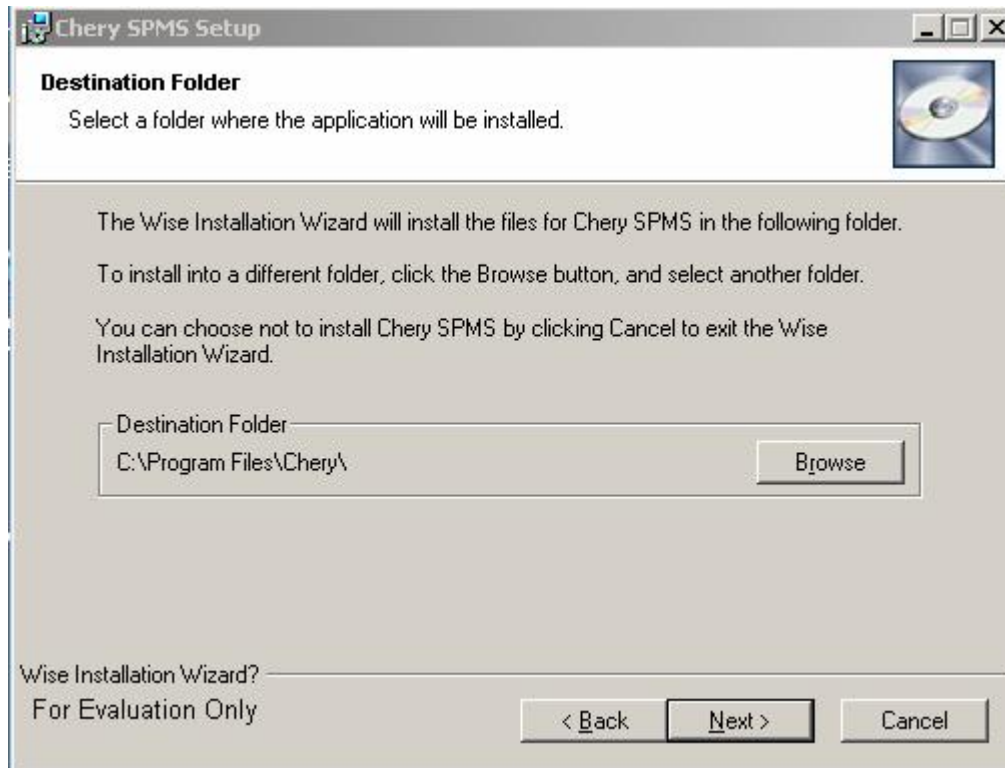
1. First, please click the install document “CHERY-SPMS(V1.1.0).MSI”. Then you will see a interface as follow:



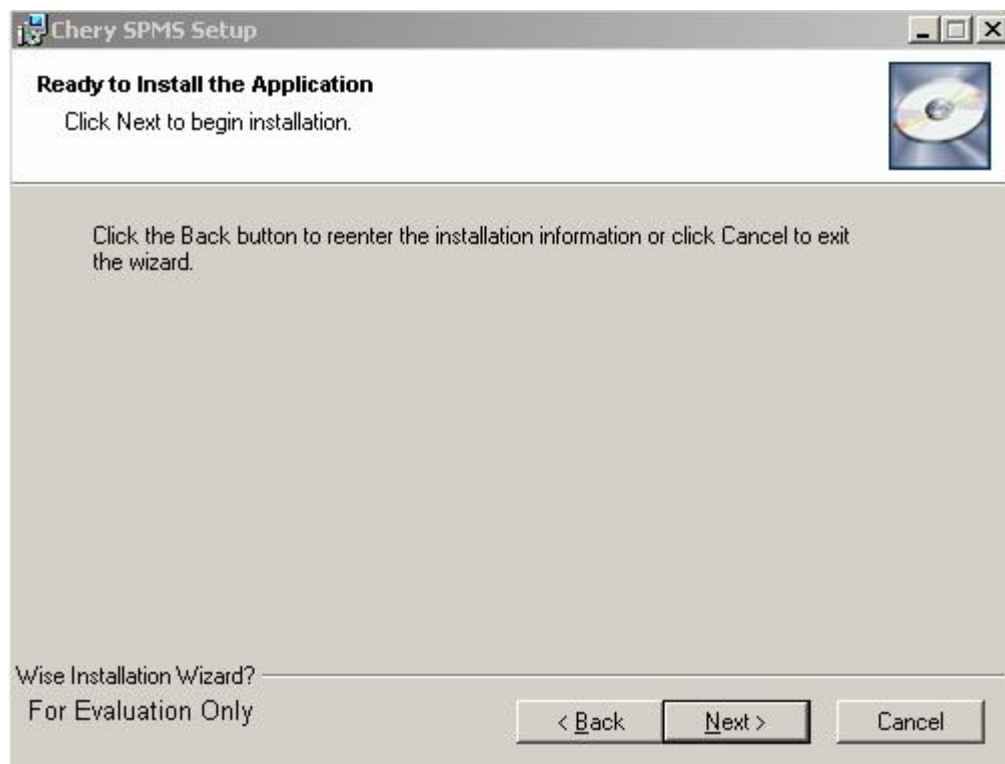
2. Second, click the button “Next”, then you will see the next interface as follow:



- In this step, you can input your name in the “Full name” section and input your company name in the “Organization” section. Then click the button “Next”, you will enter the next interface:



- Please click the button “Next” to install the system to continue the install process:



- Please click the button “Next” to install the system. After the install process, then

you will see the finish interface:

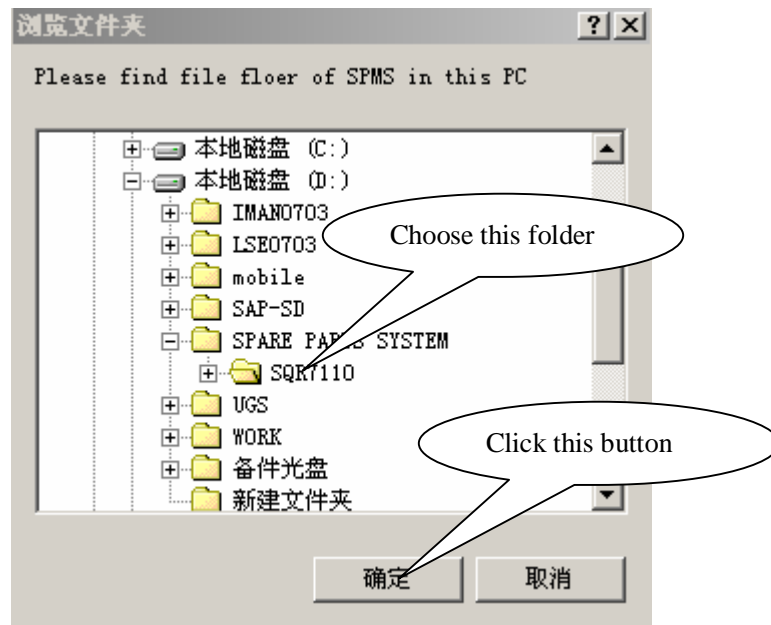


Second, entry the software and use it.

1. There have five databases in the website www.cheryglobal.com, they are SQR7110、SQR7160、SQR7162、SQR7240 and SQR7246. Please download anyone you need.
2. When you finished it, please decompress the compressed files to any path you want. Just like decompress it as D:\SPARE PARTS SYSTEM.
3. After finished the install, you can find a folder named "chery" in the program of start menu, there has an executable document named "Chery SPMS V1.1.0". Click it and you will see the interface as follow:



Then find the path you put the database, just like D:\SPARE PARTS SYSTEM, as follow:

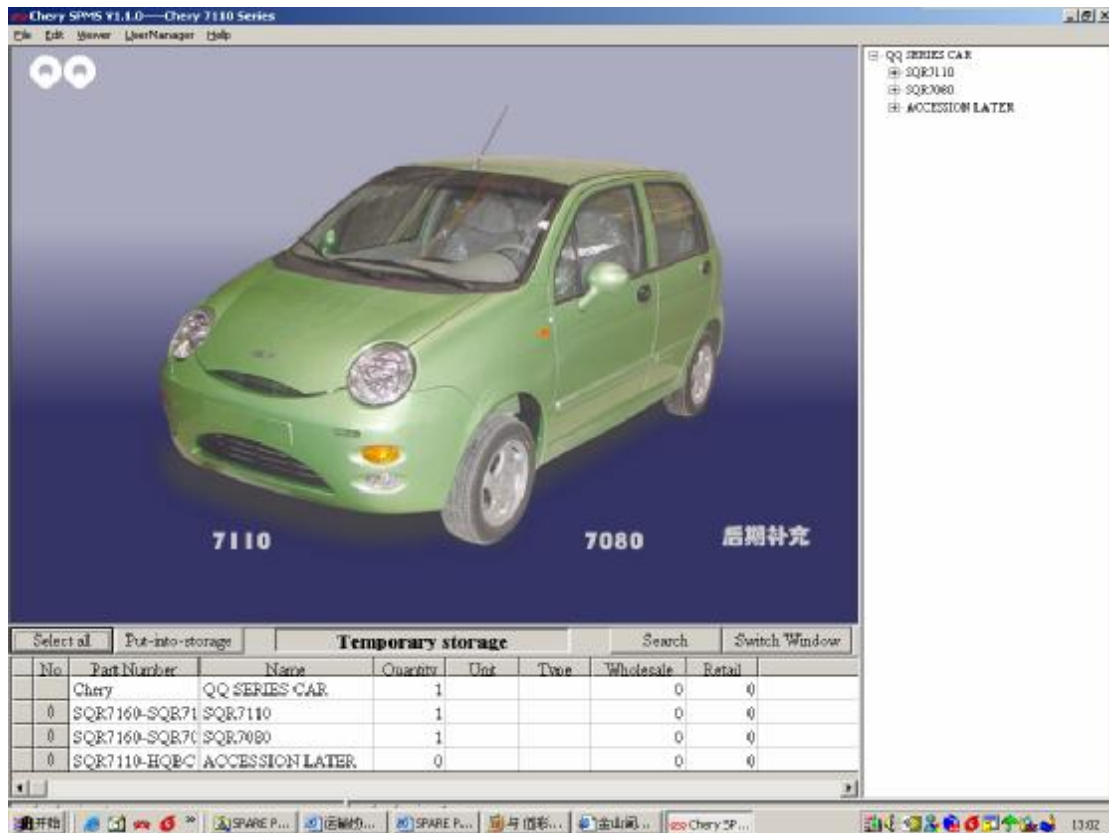


Please choose the folder SQR7110, if you have download other models, you can choose another models. then please click enter.

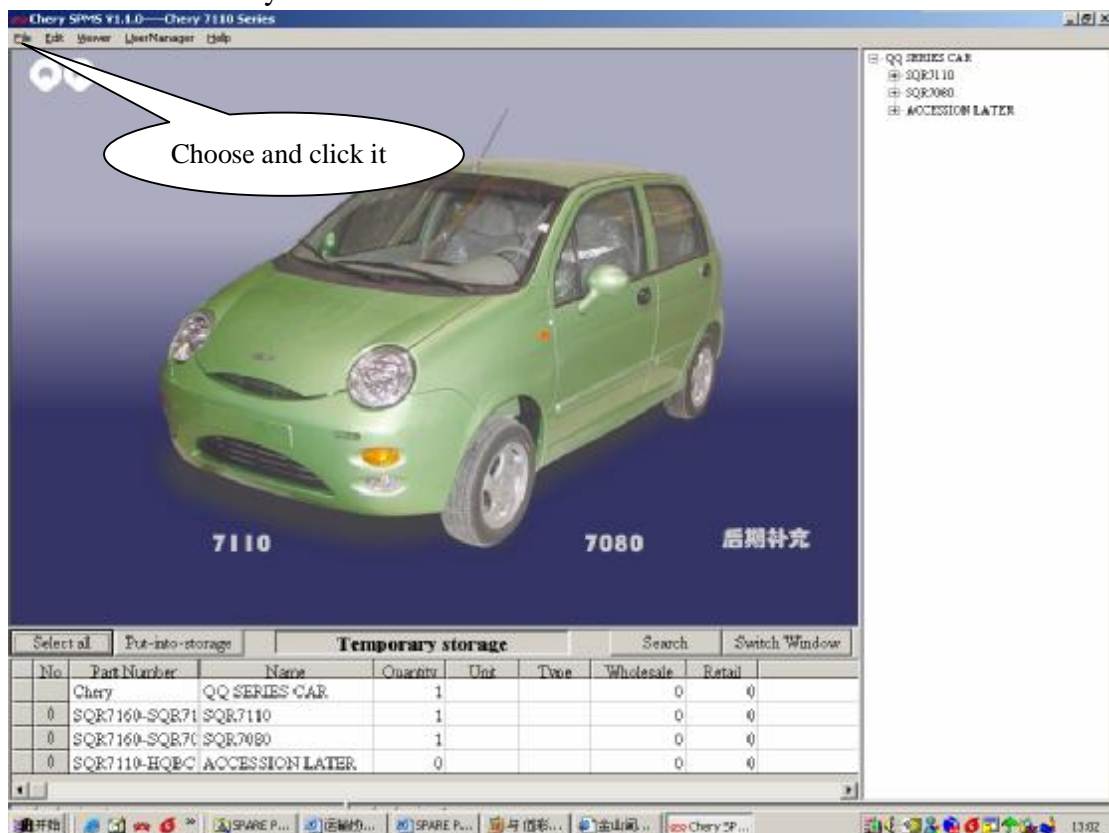
4. After you click the button “OK”, you will see the entry interface as follow:



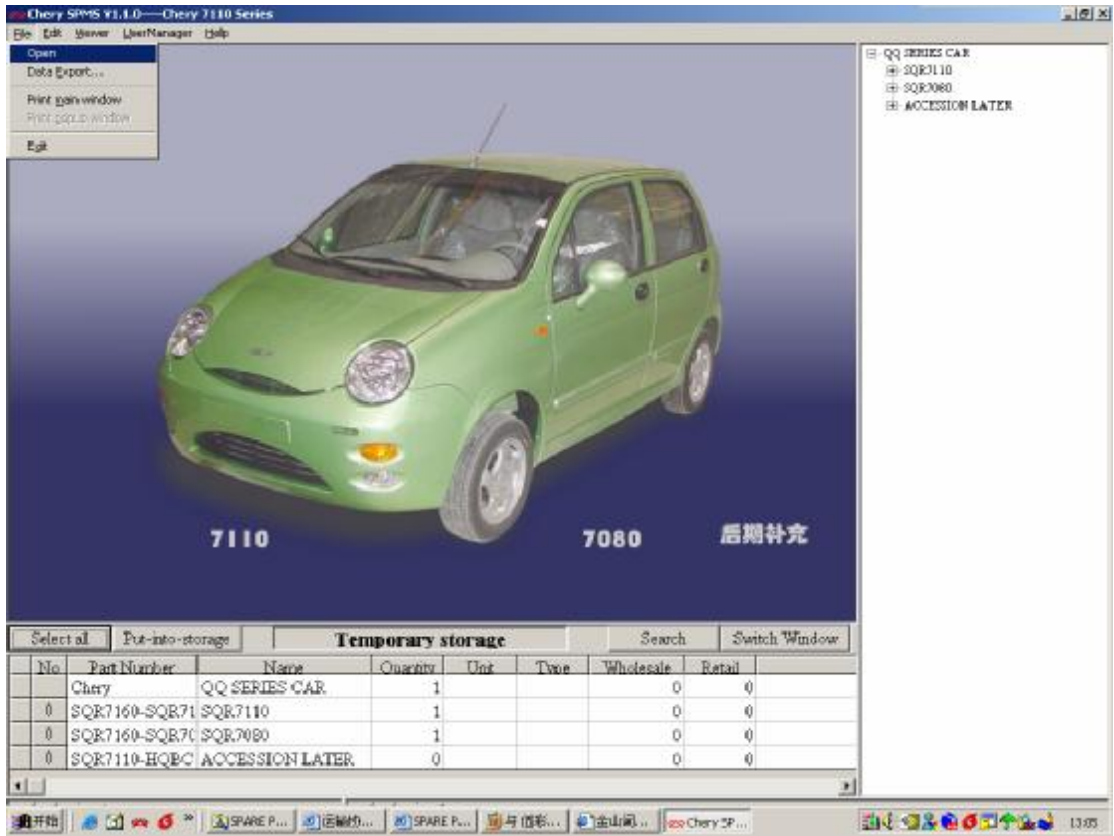
If the database you choose is SQR7160, the model in the interface will show “Chery 7160 Series”. The password for all the chery model cars is chery. Input the password and click “go”, you will entry the system as follow”



6. Then you can enjoy the system. If you want change the model, please choose the file item in the system:



Choose it and click the open item as follow:



7. Then you will see a new interface as follows:



then click the button "OK", you will see the interface

as the step 3.



Then you can choose another chery model car. The entry step is same as above.